

Clamp Gaskets

Clamp Gaskets - FKM

Size	Black Part #
1/2"	42MP-SFY50
3/4"	42MP-SFY75
1"	40MP-SFY100
1-1/2"	40MP-SFY150
2"	40MP-SFY200
2-1/2"	40MP-SFY250
3"	40MP-SFY300
4"	40MP-SFY400
5"	40MP-SFY500
6"	40MP-SFY600
8"	40MP-SFY800

NOTE: Also available in blue, green, purple, pink, red, and yellow

Features

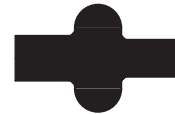
- Color code: one white dot and one yellow dot

Approvals

- Meets 21CFR 177.2600
- Passed U.S.P. Class VI Cytotoxicity testing



Type 1 - Standard
1/2" - 3/4"



Type 1 - Standard
1" and larger

Clamp Gaskets - Silicone

Size	White Part #
1/2"	42MP-XW50
3/4"	42MP-XW75
1"	40MP-XW100
1-1/2"	40MP-XW150
2"	40MP-XW200
2-1/2"	40MP-XW250
3"	40MP-XW300
4"	40MP-XW400
6"	40MP-XW600

Features

- Color code: one pink dot
- Peroxide cured

Approvals

- Meets 21CFR 177.2600
- Passed U.S.P. Class VI Cytotoxicity testing



Type 1 - Standard
1/2" - 3/4"



Type 1 - Standard
1" and larger

Clamp Gaskets - Silicone

Size	Clear Part #
1/2"	42MP-XCPL50
3/4"	42MP-XCPL75
1"	40MP-XCPL100
1-1/2"	40MP-XCPL150
2"	40MP-XCPL200
2-1/2"	40MP-XCPL250
3"	40MP-XCPL300
4"	40MP-XCPL400
5"	40MP-XCPL500
6"	40MP-XCPL600
8"	40MP-XCPL800

Features

- Color code: no dot
- Platinum cured

Approval

- Meets 21CFR 177.2600
- Passed U.S.P. Class VI Cytotoxicity testing



Type 1 - Standard
1/2" - 3/4"



Type 1 - Standard
1" and larger

Clamp Gaskets - PTFE

Size	White Part #
1/2"	42MP-G50
3/4"	42MP-G75
1"	40MP-G100
1-1/2"	40MP-G150
2"	40MP-G200
2-1/2"	40MP-G250
3"	40MP-G300
4"	40MP-G400
5"	40MP-G500
6"	40MP-G600
8"	40MP-G800
10"	40MP-G1000
12"	40MP-G1200

Features

- Color code: no dot
- Not recommended for use with bolted clamps

Approvals

- Meets 21CFR 177.1550
- Passed U.S.P. Class VI Cytotoxicity testing



Type 1 - Standard
1/2" - 3/4"



Type 1 - Standard
1" and larger



NOTE: PTFE is a material subject to plastic flow. When cycled through heat and then cooled down in process lines, PTFE gaskets will not return to the original configuration, and it will continue to compress as the cycling continues. This plastic flow will allow leakage if clamp torques are not maintained. Visit dixonvalve.com for sizing charts.