

LP Gas Couplings and Adapters

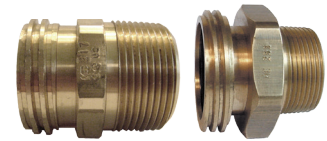
Approvals

- Products meet or exceed the requirements of Compressed Gas Association (CGA), the National Fire Protection Association (NFPA), the Canadian Gas Association, American Society of Mechanical Engineers (ASME), and Underwriters' Laboratories (UL)

Male Acme x Male NPT Adapters

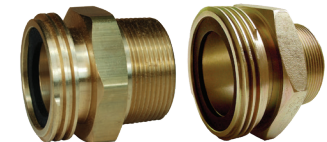
Male Acme	Male NPT	Female NPT	Brass Part #
1-3/4"	1-1/4"	--	ME217
2-1/4"	1-1/4"	--	ME233
2-1/4"	1-1/2"	1"	ME502-12/8 ¹
3-1/4"	2"	--	ME503-16

¹ Dual threads - male outside / female inside



ME217

ME233



ME502-12/8

ME503-16

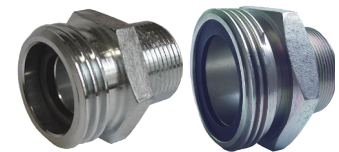
Male Acme x Female NPT Adapters

Male Acme	Female NPT	Brass Part #
1-3/4"	1"	ME214
3-1/4"	2"	ME252-16



Male Acme x Male NPT Adapters

Male Acme	Male NPT	Steel Part #
1-3/4"	1-1/4"	ME217S
2-1/4"	1-1/4"	ME233S
3-1/4"	2"	ME503S-16



ME217S

ME503S-16

Male Acme x Female NPT Adapter

Male Acme	Female NPT	Steel Part #
3-1/4"	2"	ME252S-16



Female Acme x Male Acme Adapters

Female Acme	Male Acme	Material	Part #
3-1/4"	1-3/4"	brass	ME612
		steel	ME612S



brass

steel