


Table of Contents

King Crimp	
Cam & groove couplings	4
Combination nipples	5
Flanged fittings.....	6
Sanitary stems.....	7
Frac fittings.....	9-10
Inserter Equipment	11
Hose room accessories.....	11
Crimp working pressure chart.....	12
Crimp recommendations.....	13-16

Crimp Recommendations

The crimp recommendation charts on pages 13-17 are only guides. It will not apply to every coupling situation. In some instances alternative dies and crimping dimensions must be employed to ensure safety. Experience has shown that variances in the construction of similar hoses and couplings may cause some assemblies to react differently when crimped. It is not uncommon to find a hose with an outer diameter that fluctuates from one end to the other or from production lot to production lot. These inconsistencies coupled with the inherent differences between textile or wire braid, hard or soft wall, the presence or absence of an internal spiral wire and the differences in hose coverings make it difficult to establish hard and fast rules. Therefore, it is imperative that hose dimensions are accurately measured, assemblies are tested, and documentation is maintained. 

Safety

Dixon®'s couplings and retention devices are designed to work safely for their intended use. The selection of the proper hose, coupling, and retention device, and the proper application of the coupling to the hose are of utmost importance.

Users must consider the size, temperature, application, media, pressure, and hose and coupling manufacturer's recommendations when selecting the proper hose assembly components. Dixon recommends that all hose assemblies be tested in accordance with the Association for Rubber Products Manufacturer's (ARPM) recommendations and be inspected regularly (before each use) to ensure that they are not damaged or have become loose. Visit ARPMINC.com for more information.

Where safety devices are integral to the coupling, they must be working and utilized. The use of supplementary safety devices such as safety clips or safety cables are recommended.

If any problem is detected, couplings must be removed from service immediately.

Dixon is available to consult, train, and recommend the proper selection and application of all fittings we sell. We strongly recommend that distributors and end users make use of Dixon's Testing and Recommendation Services. Call 877.963.4966 or click dixonvalve.com to learn more.

Recommended Working Pressures

Specifications

- Maximum recommended working pressures are given in PSI, at 70°F ambient temperature

Swaged or Crimped

← VS →

Crimped

Size	Standard Fittings	Long Style Fittings	Light Duty Fittings		Cam and Groove
	TM, TP, TG	TML, TPL, TGL	NO Notched Fittings TM, TP, TG, RN...NO	NOS Notched Short Fittings RST...NOS, STC...NOS, GAS...NOS	
1"	---	---	---	---	250
1-1/4"	600	1,000	350	---	---
1-1/2"	600	1,000	350	250	250
2"	600	1,000	350	250	250
2-1/2"	600	1,000	250	---	150
3"	600	1,000	250	250	125
4"	500	850	250	---	100
5"	450	750	---	---	---
6"	400	700	---	---	---
8"	350	600	---	---	---
10"	300	550	---	---	---

Size	Crimp style King Combination Nipples		Crimp style Cam and Groove	
	sleeve	ferrule	sleeve	ferrule
1"	400	400	250	250
1-1/4"	---	---	---	---
1-1/2"	300	350	250	250
2"	250	300	250	250
2-1/2"	---	300	---	---
3"	200	300	125	150
4"	175	300	110	150
5"	---	---	---	---
6"	75	230	75	75

NOTE: The assembly's (hose + coupling) maximum working pressure is the lesser of:

- 1) The hose rated working pressure, or
- 2) The coupling rated working pressure

NOTE: For hoses which use IXF48-3 to IXF48-5 and IXF64-2 to IXF64-5, consult Dixon® for working pressures.

Crimp Style Domestic Cam & Groove

Dixon® Type C Couplers



Size	356T6 Aluminum Part #	Brass Part #	316 Stainless Steel Part #	Unplated Ductile Iron Part #
1"	100-C-AL	100-C-BR	100-C-SS	---
1-1/2"	150-C-AL	150-C-BR	150-C-SS	---
2"	200-C-AL	200-C-BR	200-C-SS	---
3"	300-C-AL	300-C-BR	300-C-SS	300-C-MI
4"	400-C-AL	400-C-BR	400-C-SS	400-C-MI
6"	600-C-AL	600-C-BR	600-C-SS	600-C-MI

EZ Boss-Lock Type C Couplers



Size	316 Stainless Steel Part #
1"	RC100EZCR
1-1/4"	RC125EZCR
1-1/2"	RC150EZCR
2"	RC200EZCR
3"	RC300EZCR
4"	RC400EZCR
6"	RC600EZCR

Type E Adapters



Size	356T6 Aluminum Part #	Brass Part #	316 Stainless Steel Part #	Unplated Ductile Iron Part #
1"	100-E-AL	100-E-BR	100-E-SS	---
1-1/2"	150-E-AL	150-E-BR	150-E-SS	---
2"	200-E-AL	200-E-BR	200-E-SS	---
3"	300-E-AL	300-E-BR	300-E-SS	300-E-MI
4"	400-E-AL	400-E-BR	400-E-SS	400-E-MI
6"	600-E-AL	600-E-BR	600-E-SS	600-E-MI

Crimp Style Global Cam and Groove

Type C Couplers



Size	A380 Permanent Mold Aluminum Part #	ASTMC 3800 Forged Brass Part #	316 Investment Cast Stainless Part #
1"	G100-C-ALCR	G100-C-BRCR	G100-C-SSCR
1-1/2"	G150-C-ALCR	G150-C-BRCR	G150-C-SSCR
2"	G200-C-ALCR	G200-C-BRCR	G200-C-SSCR
3"	G300-C-ALCR	G300-C-BRCR	G300-C-SSCR
4"	G400-C-ALCR	G400-C-BRCR	G400-C-SSCR
6"	G600-C-ALCR	---	G600-C-SSCR

Type E Adapters



Size	A380 Permanent Mold Aluminum Part #	ASTMC 3800 Forged Brass Part #	316 Investment Cast Stainless Part #
1"	G100-E-ALCR	G100-E-BRCR	G100-E-SSCR
1-1/2"	G150-E-ALCR	G150-E-BRCR	G150-E-SSCR
2"	G200-E-ALCR	G200-E-BRCR	G200-E-SSCR
3"	G300-E-ALCR	G300-E-BRCR	G300-E-SSCR
4"	G400-E-ALCR	G400-E-BRCR	G400-E-SSCR
6"	G600-E-ALCR	---	G600-E-SSCR

King Crimp® Style Combination Nipples

Threaded End

Feature

- There are two grooves on the crimp style King combination nipples. The second groove is the roll stamp groove, which has the part number and "call Dixon®" stamped on it. This groove is a smooth concentric groove so that the stamp is legible.

Size	Schedule 80 Plated Carbon Steel Part #	316 Stainless Steel Part #
1"	STC10CS	RST10CS
1-1/4"	STC15CS	RST15CS
1-1/2"	STC20CS	RST20CS
2"	STC25CS	RST25CS
2-1/2"	STC30CS	RST30CS
3"	STC35CS	RST35CS
4"	STC40CS	RST40CS
6"	STC60CS	RST60CS

NOTE: For 8" options see page 7



Grooved End

Feature

- There are two grooves on the crimp style King combination nipples. The second groove is the roll stamp groove, which has the part number and "call Dixon" stamped on it. This groove is a smooth concentric groove so that the stamp is legible.

Size	Schedule 80 Plated Carbon Steel Part #	316 Stainless Steel Part #
1"	STV10CS	RSTV10CS
1-1/2"	STV20CS	RSTV20CS
2"	STV25CS	RSTV25CS
2-1/2"	STV30CS	RSTV30CS
3"	STV35CS	RSTV35CS
4"	STV40CS	RSTV40CS
6"	STV60CS	RSTV60CS



Beveled End

Feature

- There are two grooves on the crimp style King combination nipples. The second groove is the roll stamp groove, which has the part number and "call Dixon" stamped on it. This groove is a smooth concentric groove so that the stamp is legible.

Size	Schedule 80 Carbon Steel Part #	316 Stainless Steel Part #
1"	STB10CS	RSTB10CS
1-1/2"	STB20CS	RSTB20CS
2"	STB25CS	RSTB25CS
2-1/2"	STB30CS	RSTB30CS
3"	STB35CS	RSTB35CS
4"	STB40CS	RSTB40CS
6"	STB60CS	RSTB60CS

NOTE: For additional information on pipe dimensions, please reference dixonvalve.com.



FJIC

Size	Ambient Working Pressures @ 70°F (21°C)		Carbon Steel Part #
	Sleeve	Ferrule	
1"	400	400	SFJCT10CS
1-1/2"	300	350	SFJCT20CS
2"	250	300	SFJCT25CS

Only use the crimp style shanks with the crimp style sleeves and ferrules. Due to differences in dimensions and tolerances for safety reasons, do not interchange other manufacturers' products with Dixon products.



King Crimp® Style Flanged Fitting

Combination Nipple x 150# ASA Fixed (Welded) Flanges



Only use the crimp style shanks with the crimp style sleeves and ferrules. Due to differences in dimensions and tolerances for safety reasons, do not interchange other manufacturers' products with Dixon® products.

Features

- There are two grooves on the crimp style King combination nipples. The second groove is the roll stamp groove, which has the part number and "call Dixon" stamped on it. This groove is a smooth concentric groove so that the stamp is legible.



stainless steel

Size	Steel Part #	316 Stainless Steel Part #
1-1/2"	FST20CS	RFST20CS
2"	FST25CS	RFST25CS
3"	FST35CS	RFST35CS
4"	FST40CS	RFST40CS
6"	FST60CS	RFST60CS

NOTE: For flange and pipe dimensions, diagrams, and additional information, please reference dixonvalve.com.



carbon steel

Combination Nipple x TTMA Flanges

Feature

- To be used with King Crimp sleeves and/or ferrules

Size	Flange Thickness	Carbon Steel Part #	Aluminum Part #
2"	3/8"	---	ATTFST25CS
3"	1/4"	TTFST35CS	ATTFST35CS
	3/8"	TTFST35CS-THK	---
4"	5/16"	TTFST40CS	ATTFST40CS
	3/8"	TTFST40CS-THK	---

NOTE: For flange and pipe dimensions, diagrams, and additional information, please reference dixonvalve.com.



aluminum

Nipples for Floating Flanges

Feature

- To be used with King Crimp sleeves and/or ferrules

Size	Plated Carbon Steel Part #	316 Stainless Steel Part #
2"	N25CS	RN25CS
3"	N35CS	RN35CS
4"	N40CS	RN40CS
6"	N60CS	RN60CS



carbon steel

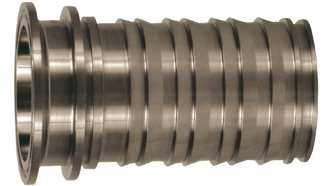
Dixon Boss Sanitary King Crimp® Stem

Features

- To be used with King Crimp sleeves and/or ferrules see pages 13-17
- Wetted surfaces meet governmental and independent regulatory standards only

Clamp End x Hose Shank Stems

Size	316 Stainless Steel Part #
1"	CSSR100CS
1-1/2"	CSSR150CS
2"	CSSR200CS
3"	CSSR300CS
4"	CSSR400CS



King Crimp Style

Short Combination Nipples - Threaded End

Size	Schedule 40 Plated Carbon Steel Part #
8"	STC80CS



NOTE: For use with ferrules below

Short Combination Nipples - Grooved End

Size	Schedule 40 Plated Carbon Steel Part #
8"	STV80CS



NOTE: For additional information on pipe dimensions, please reference dixonvalve.com.

Short Ferrules

Hose I.D.	Hose O.D.		Ferrule Wall Thickness	Ferrule I.D.	Ferrule Overall Length	Carbon Steel Part #
	From	To				
8"	8-29/64"	8-36/64"	.120"	8.625"	4.25"	CFS800-1CS
	8-37/64"	8-44/64"	.120"	8.750"	4.25"	CFS800-2CS
	8-45/64"	8-52/64"	.120"	8.875"	4.25"	CFS800-3CS
	8-53/64"	8-60/64"	.120"	9.000"	4.25"	CFS800-4CS
	8-61/64"	9-4/64"	.120"	9.125"	4.25"	CFS800-5CS
	9-5/64"	9-12/64"	.120"	9.250"	4.25"	CFS800-6CS
	9-13/64"	9-20/64"	.120"	9.375"	4.25"	CFS800-7CS
	9-21/64"	9-28/64"	.120"	9.500"	4.25"	CFS800-8CS



NOTE: Consult Dixon® for additional ferrule sizes.

King Crimp® Style

Combination Nipples - Heavy-Duty, Threaded End



Application

- Used in the fast-paced transfer of water, chemicals, and sand slurry to a hydraulic fracturing site

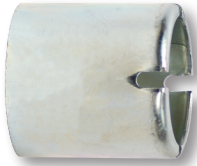
from 100 to 300 PSI WP (4:1 SF) have excellent test results with the standard King Crimp ferrules CF400-xxCS.

- 400 PSI working pressure at 70°F (21°C) when used with heavy-duty crimp ferrules (CF400-6CSHD through CF400-16CSHD)
- Used with ferrules below

Features

- Water and petroleum transfer hoses rated

Size	Schedule 80 Steel Part#
4"	STC40CSHD



King Crimp® Style Ferrules



Only use the crimp style shanks with the crimp style sleeves and ferrules. Due to differences in dimensions and tolerances for safety reasons, do not interchange other manufacturer's products with Dixon® products.

3" Hose I.D.

Hose I.D.	Hose O.D.		400 PSI Hose & Below Use: Part #	Ferrule Wall Thickness	Ferrule I.D.	Ferrule Overall Length	Hose O.D.		400 PSI Hose & Below Use: Part #	Ferrule Wall Thickness	Ferrule I.D.	Ferrule Overall Length
	From	To					From	To				
3"	3-13/64"	3-16/64"	CF300-1CS	.090"	3.313"	4"	3-45/64"	3-48/64"	CF300-9CS	.090"	3.813"	4"
	3-17/64"	3-20/64"	CF300-2CS	.090"	3.375"	4"	3-49/64"	3-52/64"	CF300-10CS	.090"	3.875"	4"
	3-21/64"	3-24/64"	CF300-3CS	.090"	3.438"	4"	3-53/64"	3-56/64"	CF300-11CS	.090"	3.938"	4"
	3-25/64"	3-28/64"	CF300-4CS	.090"	3.500"	4"	3-57/64"	3-60/64"	CF300-12CS	.090"	4.000"	4"
	3-29/64"	3-32/64"	CF300-5CS	.090"	3.563"	4"	3-61/64"	4"	CF300-13CS	.090"	4.063"	4"
	3-33/64"	3-36/64"	CF300-6CS	.090"	3.625"	4"	4-1/64"	4-4/64"	CF300-14CS	.090"	4.125"	4"
	3-37/64"	3-40/64"	CF300-7CS	.090"	3.688"	4"	4-5/64"	4-8/64"	CF300-15CS	.090"	4.188"	4"
	3-41/64"	3-44/64"	CF300-8CS	.090"	3.750"	4"	4-9/64"	4-12/64"	CF300-16CS	.090"	4.250"	4"

4" Hose I.D.


Hose I.D.	Hose O.D.		300 PSI Hose & Below Use: Part #	Ferrule Wall Thickness	400 PSI Hose Use: Heavy Duty (H.D.) Part #	Ferrule Wall Thickness	Ferrule I.D.	Ferrule Overall Length
	From	To						
4"	4-13/64"	4-16/64"	CF400-1CS	.090"	---	---	4.313"	4"
	4-17/64"	4-20/64"	CF400-2CS	.090"	---	---	4.375"	4"
	4-21/64"	4-24/64"	CF400-3CS	.090"	---	---	4.438"	4"
	4-25/64"	4-28/64"	CF400-4CS	.090"	---	---	4.500"	4"
	4-29/64"	4-32/64"	CF400-5CS	.090"	---	---	4.563"	4"
	4-33/64"	4-36/24"	CF400-6CS	.090"	CF400-6CSHD	.120"	4.625"	4"
	4-37/64"	4-40/64"	CF400-7CS	.090"	CF400-7CSHD	.120"	4.688"	4"
	4-41/64"	4-44/64"	CF400-8CS	.090"	CF400-8CSHD	.120"	4.750"	4"
	4-45/64"	4-48/64"	CF400-9CS	.090"	CF400-9CSHD	.120"	4.813"	4"
	4-49/64"	4-52/64"	CF400-10CS	.090"	CF400-10CSHD	.120"	4.875"	4"
	4-53/64"	4-56/64"	CF400-11CS	.090"	CF400-11CSHD	.120"	4.938"	4"
	4-57/64"	4-60/64"	CF400-12CS	.090"	CF400-12CSHD	.120"	5.000"	4"
	4-61/64"	5"	CF400-13CS	.090"	CF400-13CSHD	.120"	5.063"	4"
	5-1/64"	5-4/64"	CF400-14CS	.090"	CF400-14CSHD	.120"	5.125"	4"
	5-5/64"	5-8/64"	CF400-15CS	.090"	CF400-15CSHD	.120"	5.188"	4"
5-9/64"	5-12/64"	CF400-16CS	.090"	CF400-16CSHD	.120"	5.250"	4"	

Dixon® Boss LPS Frac Fittings

Application

- Used in the fast-paced transfer of water, chemicals, and sand slurry to a hydraulic fracturing site

Features

- One-piece stem design eliminates the leak path common with two-piece threaded systems
- Interchangeable with current fittings; phase them into your operation
- Designed to work with Dixon King Crimp® sleeves or ferrules 

Materials

- Fittings: machined iron to ASTM standards; all stems zinc plated
- Male 3", 4", and 6" NPT fittings are schedule 80 pipe; 8" NPT fittings are schedule 40 pipe; all sizes meet ASTM standards
- Nut: forged steel meeting AISI standards

Specifications

- **400 PSI** working pressure at **70°F (21°C)** for 3" and 4" sizes; 4:1 safety factor (SF)¹
- **230 PSI** working pressure at **70°F (21°C)** for 6" size; 4:1 safety factor (SF)
- **150 PSI** working pressure at **70°F (21°C)** for 8" size; 3:1 safety factor (SF)

¹400 PSI working pressure with a minimum 4:1 safety factor (*hose burst: hose working pressure*) is only achieved with:

- 3" size uses standard crimp ferrules
- 4" size requires heavy duty (HD) crimp ferrules, CF400-6CSHD through CF400-16CSHD and heavy duty stems

NOTE: Water and petroleum transfer hoses rated from **100 to 300 PSI WP** (4:1 SF) have excellent test results with the standard King Crimp ferrules CF400-xxCS.

Complete Male / Female Assembly

Size	Figure	Part #
2"	200	HUMF200200CS
	206	HUMF206200CS
3"	100	HUMF100300CS
	200	HUMF200300CS
	206	HUMF206300CS
4"	100	HUMF100400CS
	200	HUMF200400CS
	206	HUMF206400CS
6"	100	HUMF100600CS
	200	HUMF200600CS
	206	HUMF206600CS
8"	100	HUMF100800CS
	200	HUMF200800CS
	206	HUMF206800CS



Female

Size	Figure	Part #
2"	206	HUF206200CS
3"	100	HUF100300CS
	206	HUF206300CS
4"	100	HUF100400CS
	206	HUF206400CS
6"	100	HUFALL600CS ¹
	206	
8"	100	HUFALL800CS ¹
	206	



¹ Meets both figure 100 and 206 dimensional specifications

Dixon® Boss LPS Frac Fittings



3" and 4"



6" and 8"

Male with Nut

Size	Figure	Part #
2"	200	HUM200200CS ¹
	206	HUM206200CS ²
3"	100	HUM100300CS ¹
	200	HUM200300CS ¹
	206	HUM206300CS ²
4"	100	HUM100400CS ¹
	200	HUM200400CS ¹
	206	HUM206400CS ²
6"	100	HUM100600CS ¹
	200	HUM200600CS ¹
	206	HUM206600CS ²
8"	100	HUM100800CS ¹
	200	HUM200800CS ¹
	206	HUM206800CS ²

¹ Includes nut

² Includes nut and O-ring

Coupling Inserters

Features

- Highly portable
- Inserts 4", 5", 6", 8", 10" and 12" couplings
- Includes CI96AH pump

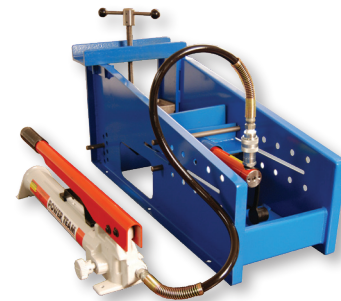
Part #	
CI9	
• Coupling inserter pusher plates (not shown) must be purchased separately	
Hose I.D.	Part #
4" - 5"	45CIPUSH
6" - 8"	68CIPUSH
10" - 12"	1012CIPUSH



Feature

- For insertion of hose shanks into hose with a 2-3/4" to 7-1/4" O.D.

Description	Part #
Supplied with a 10,000 PSI hand pump and 5 ton ram	CI96
Supplied with a 10,000 PSI air/hydraulic pump and 5 ton ram	CI96AH
Small jaws for 1" to 3" O.D. hose	CI9311SML



coupling inserter with hand pump

Coupling Lubricant

Features

- For use in assembly operations involving natural or synthetic rubber or plastic
- An excellent lubricant when rubber or plastic needs to be cut, machined, pressed, turned, trimmed, or ground
- Biodegradable lubricant for coupling shanks
- Available in a one liter bottle (DCL20) or a four liter bottle (DCL80)



Diameter Tape

Features

- 6' tape for quickly finding the outside diameter of any cylindrical object
- Converts circumference to O.D. at the measured point
- Plastic case



Hose Knife

Features

- For fast cutting of rubber hose and belting
- Guard protects hand while cutting



Crimp Working Pressure Chart

Size	Temperature	Fitting	Clamp	Working Pressure PSIG	Size	Temperature	Fitting	Clamp	Working Pressure PSIG
1"	Ambient	STC10CS	sleeve	400	3"	Ambient	STC35CS	sleeve	200
	160°F (71°C)			270		160°F (71°C)			140
	180°F (82°C)			250		180°F (82°C)			100
	250°F (121°C)			200		250°F (121°C)			75
	Ambient	STC10CS	ferrule	400	Ambient	STC35CS	ferrule	300	
	160°F (71°C)			270	160°F (71°C)			218	
	180°F (82°C)			250	180°F (82°C)			200	
	250°F (121°C)			200	250°F (121°C)			100	
	Ambient	100-C/E	sleeve	250	Ambient	300-C/E	sleeve	125	
	160°F (71°C)			242	160°F (71°C)			100	
	180°F (82°C)			240	180°F (82°C)			60	
	250°F (121°C)			200	250°F (121°C)			55	
	Ambient	100-C/E	ferrule	250	Ambient	300-C/E	ferrule	150	
	160°F (71°C)			242	160°F (71°C)			125	
	180°F (82°C)			240	180°F (82°C)			100	
	250°F (121°C)			200	250°F (121°C)			75	
1-1/2"	Ambient	STC20CS	sleeve	300	4"	Ambient	STC40CS	sleeve	175
	160°F (71°C)			225		160°F (71°C)			100
	180°F (82°C)			200		180°F (82°C)			100
	250°F (121°C)			100		250°F (121°C)			50
	Ambient	STC20CS	ferrule	350	Ambient	STC40CS	ferrule	300	
	160°F (71°C)			225	160°F (71°C)			218	
	180°F (82°C)			200	180°F (82°C)			200	
	250°F (121°C)			150	250°F (121°C)			100	
	Ambient	150-C/E	sleeve	250	Ambient	400-C/E	sleeve	110	
	160°F (71°C)			200	160°F (71°C)			75	
	180°F (82°C)			100	180°F (82°C)			60	
	250°F (121°C)			75	250°F (121°C)			50	
	Ambient	150-C/E	ferrule	250	Ambient	400-C/E	ferrule	150	
	160°F (71°C)			200	160°F (71°C)			75	
	180°F (82°C)			150	180°F (82°C)			75	
	250°F (121°C)			100	250°F (121°C)			75	
2"	Ambient	STC25CS	sleeve	250	6"	Ambient	STC60CS	sleeve	75
	160°F (71°C)			150		160°F (71°C)			---
	180°F (82°C)			125		180°F (82°C)			---
	250°F (121°C)			80		250°F (121°C)			---
	Ambient	STC25CS	ferrule	300	Ambient	STC60CS	ferrule	230	
	160°F (71°C)			239	160°F (71°C)			---	
	180°F (82°C)			225	180°F (82°C)			---	
	250°F (121°C)			100	250°F (121°C)			---	
	Ambient	200-C/E	sleeve	250	Ambient	600-C/E	sleeve	75	
	160°F (71°C)			100	160°F (71°C)			---	
	180°F (82°C)			50	180°F (82°C)			---	
	250°F (121°C)			50	250°F (121°C)			---	
	Ambient	200-C/E	ferrule	250	Ambient	600-C/E	ferrule	75	
	160°F (71°C)			100	160°F (71°C)			---	
	180°F (82°C)			100	180°F (82°C)			---	
	250°F (121°C)			100	250°F (121°C)			---	

King Crimp Style Ferrules

Only use the crimp style shanks with the crimp style sleeves and ferrules. Due to differences in dimensions and tolerances for safety reasons, do not interchange other manufacturers' products with Dixon® products.



Hose I.D.	Hose O.D.		Work. Pressure (PSI)		Ferrule I.D.	Ferrule Wall Thickness	Ferrule Overall Length	Carbon Steel Part #	304 Stainless Steel Part #
	From	To	cam & groove ¹	King Crimp nipple ²					
1"	1-13/64"	1-16/64"	250	400	1.313"	.060"	2-13/16"	CF100-1CS	CF100-1SS
	1-17/64"	1-20/64"	250	400	1.375"	.060"	2-13/16"	CF100-2CS	CF100-2SS
	1-21/64"	1-24/64"	250	400	1.438"	.060"	2-13/16"	CF100-3CS	CF100-3SS
	1-25/64"	1-28/64"	250	400	1.500"	.060"	2-13/16"	CF100-4CS	CF100-4SS
	1-29/64"	1-32/64"	250	400	1.563"	.060"	2-13/16"	CF100-5CS	CF100-5SS
	1-33/64"	1-36/64"	250	400	1.625"	.060"	2-13/16"	CF100-6CS	CF100-6SS
	1-37/64"	1-40/64"	250	400	1.688"	.060"	2-13/16"	CF100-7CS	CF100-7SS
	1-41/64"	1-44/64"	250	400	1.750"	.060"	2-13/16"	CF100-8CS	CF100-8SS
	1-45/64"	1-48/64"	250	400	1.813"	.060"	2-13/16"	CF100-9CS	CF100-9SS
	1-49/64"	1-52/64"	250	400	1.875"	.060"	2-13/16"	CF100-10CS	CF100-10SS
1-1/4"	1-41/64"	1-44/64"	250	350	1.750"	.060"	2-13/16"	CF125-3CS	CF125-3SS
	1-45/64"	1-48/64"	250	350	1.813"	.060"	2-13/16"	CF125-4CS	CF125-4SS
	1-49/64"	1-52/64"	250	350	1.875"	.060"	2-13/16"	CF125-5CS	CF125-5SS
	1-53/64"	1-56/64"	250	350	1.938"	.060"	2-13/16"	CF125-6CS	CF125-6SS
1-1/2"	1-41/64"	1-44/64"	250	350	1.750"	.062"	2-13/16"	CF150-1CS	CF150-1SS
	1-45/64"	1-48/64"	250	350	1.813"	.060"	2-13/16"	CF150-2CS	CF150-2SS
	1-49/64"	1-52/64"	250	350	1.875"	.060"	2-13/16"	CF150-3CS	CF150-3SS
	1-53/64"	1-56/64"	250	350	1.938"	.060"	2-13/16"	CF150-4CS	CF150-4SS
	1-57/64"	1-60/64"	250	350	2.000"	.060"	2-13/16"	CF150-5CS	CF150-5SS
	1-61/64"	2"	250	350	2.063"	.060"	2-13/16"	CF150-6CS	CF150-6SS
	2-1/64"	2-4/64"	250	350	2.125"	.060"	2-13/16"	CF150-7CS	CF150-7SS
	2-5/64"	2-8/64"	250	350	2.188"	.060"	2-13/16"	CF150-8CS	CF150-8SS
	2-9/64"	2-12/64"	250	350	2.250"	.060"	2-13/16"	CF150-9CS	CF150-9SS
	2-13/64"	2-16/64"	250	350	2.313"	.060"	2-13/16"	CF150-10CS	CF150-10SS
	2-17/64"	2-20/64"	250	350	2.375"	.060"	2-13/16"	CF150-11CS	CF150-11SS
	2-21/64"	2-24/64"	250	350	2.438"	.060"	2-13/16"	CF150-12CS	CF150-12SS
2"	2-13/64"	2-16/64"	250	300	2.313"	.060"	3-1/8"	CF200-1CS	CF200-1SS
	2-17/64"	2-20/64"	250	300	2.375"	.060"	3-1/8"	CF200-2CS	CF200-2SS
	2-21/64"	2-24/64"	250	300	2.438"	.060"	3-1/8"	CF200-3CS	CF200-3SS
	2-25/64"	2-28/64"	250	300	2.500"	.060"	3-1/8"	CF200-4CS	CF200-4SS
	2-29/64"	2-32/64"	250	300	2.563"	.060"	3-1/8"	CF200-5CS	CF200-5SS
	2-33/64"	2-36/64"	250	300	2.625"	.060"	3-1/8"	CF200-6CS	CF200-6SS
	2-37/64"	2-40/64"	250	300	2.688"	.060"	3-1/8"	CF200-7CS	CF200-7SS
	2-41/64"	2-44/64"	250	300	2.750"	.060"	3-1/8"	CF200-8CS	CF200-8SS
	2-45/64"	2-48/64"	250	300	2.813"	.060"	3-1/8"	CF200-9CS	CF200-9SS
	2-49/64"	2-52/64"	250	300	2.875"	.060"	3-1/8"	CF200-10CS	CF200-10SS
	2-53/64"	2-56/64"	250	300	2.938"	.060"	3-1/8"	CF200-11CS	CF200-11SS
	2-57/64"	2-60/64"	250	300	3.000"	.060"	3-1/8"	CF200-12CS	CF200-12SS
2-1/2"	2-57/64"	2-60/64"	---	300	3.000"	.060"	3-1/2"	CF250-5CS	---
	2-61/64"	3"	---	300	3.063"	.060"	3-1/2"	CF250-6CS	---
	3-1/64"	3-4/64"	---	300	3.125"	.060"	3-1/2"	CF250-7CS	---
	3-5/64"	3-8/64"	---	300	3.188"	.060"	3-1/2"	CF250-8CS	---

¹ Based on using crimp cam and groove shanks

² Based on using King Crimp nipples

King Crimp Style Ferrules



Only use the crimp style shanks with the crimp style sleeves and ferrules. Due to differences in dimensions and tolerances for safety reasons, do not interchange other manufacturers' products with Dixon® products.



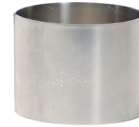
Hose I.D.	Hose O.D.		Work. Pressure (PSI)		Ferrule I.D.	Ferrule Wall Thickness	Ferrule Overall Length	Carbon Steel Part #	304 Stainless Steel Part #
	From	To	cam & groove ¹	King Crimp nipple ²					
3"	3-13/64"	3-16/64"	150	300	3.313"	.090"	4"	CF300-1CS	CF300-1SS
	3-17/64"	3-20/64"	150	300	3.375"	.090"	4"	CF300-2CS	CF300-2SS
	3-21/64"	3-24/64"	150	300	3.438"	.090"	4"	CF300-3CS	CF300-3SS
	3-25/64"	3-28/64"	150	300	3.500"	.090"	4"	CF300-4CS	CF300-4SS
	3-29/64"	3-32/64"	150	300	3.563"	.090"	4"	CF300-5CS	CF300-5SS
	3-33/64"	3-36/64"	150	300	3.625"	.090"	4"	CF300-6CS	CF300-6SS
	3-37/64"	3-40/64"	150	300	3.688"	.090"	4"	CF300-7CS	CF300-7SS
	3-41/64"	3-44/64"	150	300	3.750"	.090"	4"	CF300-8CS	CF300-8SS
	3-45/64"	3-48/64"	150	300	3.813"	.090"	4"	CF300-9CS	CF300-9SS
	3-49/64"	3-52/64"	150	300	3.875"	.090"	4"	CF300-10CS	CF300-10SS
	3-53/64"	3-56/64"	150	300	3.938"	.090"	4"	CF300-11CS	CF300-11SS
	3-57/64"	3-60/64"	150	300	4.000"	.090"	4"	CF300-12CS	CF300-12SS
	3-61/64"	4"	150	300	4.063"	.090"	4"	CF300-13CS	CF300-13SS
	4-1/64"	4-4/64"	150	300	4.125"	.090"	4"	CF300-14CS	CF300-14SS
	4-5/64"	4-8/64"	150	300	4.188"	.090"	4"	CF300-15CS	CF300-15SS
4-9/64"	4-12/64"	150	300	4.250"	.090"	4"	CF300-16CS	CF300-16SS	
4"	4-13/64"	4-16/64"	150	300	4.313"	.090"	4"	CF400-1CS	CF400-1SS
	4-17/64"	4-20/64"	150	300	4.375"	.090"	4"	CF400-2CS	CF400-2SS
	4-21/64"	4-24/64"	150	300	4.438"	.090"	4"	CF400-3CS	CF400-3SS
	4-25/64"	4-28/64"	150	300	4.500"	.090"	4"	CF400-4CS	CF400-4SS
	4-29/64"	4-32/64"	150	300	4.563"	.090"	4"	CF400-5CS	CF400-5SS
	4-33/64"	4-36/64"	150	300	4.625"	.090"	4"	CF400-6CS	CF400-6SS
	4-37/64"	4-40/64"	150	300	4.688"	.090"	4"	CF400-7CS	CF400-7SS
	4-41/64"	4-44/64"	150	300	4.750"	.090"	4"	CF400-8CS	CF400-8SS
	4-45/64"	4-48/64"	150	300	4.813"	.090"	4"	CF400-9CS	CF400-9SS
	4-49/64"	4-52/64"	150	300	4.875"	.090"	4"	CF400-10CS	CF400-10SS
	4-53/64"	4-56/64"	150	300	4.938"	.090"	4"	CF400-11CS	CF400-11SS
	4-57/64"	4-60/64"	150	300	5.000"	.090"	4"	CF400-12CS	CF400-12SS
	4-61/64"	5"	150	300	5.063"	.090"	4"	CF400-13CS	CF400-13SS
	5-1/64"	5-4/64"	150	300	5.125"	.090"	4"	CF400-14CS	CF400-14SS
	5-5/64"	5-8/64"	150	300	5.188"	.090"	4"	CF400-15CS	CF400-15SS
5-9/64"	5-12/64"	150	300	5.250"	.090"	4"	CF400-16CS	CF400-16SS	
6"	6-21/64"	6-28/64"	75	230	6.500"	.120"	5-7/8"	CF600-1CS	CF600-1SS
	6-29/64"	6-36/64"	75	230	6.625"	.120"	5-7/8"	CF600-2CS	CF600-2SS
	6-37/64"	6-44/64"	75	230	6.750"	.120"	5-7/8"	CF600-3CS	CF600-3SS
	6-45/64"	6-52/64"	75	230	6.875"	.120"	5-7/8"	CF600-4CS	CF600-4SS
	6-53/64"	6-60/64"	75	230	7.000"	.120"	5-7/8"	CF600-5CS	CF600-5SS
	6-61/64"	7-4/64"	75	230	7.125"	.120"	5-7/8"	CF600-6CS	CF600-6SS
	7-5/64"	7-12/64"	75	230	7.250"	.120"	5-7/8"	CF600-7CS	CF600-7SS
	7-13/64"	7-20/64"	75	230	7.375"	.120"	5-7/8"	CF600-8CS	CF600-8SS
7-21/64"	7-28/64"	75	230	7.500"	.120"	5-7/8"	CF600-9CS	CF600-9SS	

¹ Based on using crimp cam and groove shanks

² Based on using King Crimp nipples

King Crimp Style Sleeves

- Only use the crimp style shanks with the crimp style sleeves and ferrules. Due to differences in dimensions and tolerances for safety reasons, do not interchange other manufacturers' products with Dixon® products.
- For liquid service only
- Not intended for steam service



Hose I.D.	Hose O.D.		Work. Pressure (PSI)		Sleeve I.D.	Sleeve Wall Thick.	Sleeve Overall Length	Carbon Steel Part #	304 Stainless Steel Part #	Aluminum Part #
	From	To	cam & groove ¹	King Crimp nipple ²						
1"	1-13/64"	1-16/64"	250	400	1.313"	.060"	2-1/2"	CS100-1CS	CS100-1SS	---
	1-17/64"	1-20/64"	250	400	1.375"	.060"	2-1/2"	CS100-2CS	CS100-2SS	CS100-2AL
	1-21/64"	1-24/64"	250	400	1.438"	.060"	2-1/2"	CS100-3CS	CS100-3SS	---
	1-25/64"	1-28/64"	250	400	1.500"	.060"	2-1/2"	CS100-4CS	CS100-4SS	CS100-4AL
	1-29/64"	1-32/64"	250	400	1.563"	.060"	2-1/2"	CS100-5CS	CS100-5SS	---
	1-33/64"	1-36/64"	250	400	1.625"	.060"	2-1/2"	CS100-6CS	CS100-6SS	CS100-6AL
	1-37/64"	1-40/64"	250	400	1.688"	.060"	2-1/2"	CS100-7CS	CS100-7SS	---
	1-41/64"	1-44/64"	250	400	1.750"	.060"	2-1/2"	CS100-8CS	CS100-8SS	---
	1-45/64"	1-48/64"	250	400	1.813"	.060"	2-1/2"	CS100-9CS	CS100-9SS	---
	1-49/64"	1-52/64"	250	400	1.875"	.060"	2-1/2"	CS100-10CS	CS100-10SS	---
1-1/4"	1-41/64"	1-44/64"	250	300	1.750"	.060"	2-1/2"	CS125-3CS	CS125-3SS	---
	1-45/64"	1-48/64"	250	300	1.813"	.060"	2-1/2"	CS125-4CS	CS125-4SS	---
	1-49/64"	1-52/64"	250	300	1.875"	.060"	2-1/2"	CS125-5CS	CS125-5SS	---
	1-53/64"	1-56/64"	250	300	1.938"	.060"	2-1/2"	CS125-6CS	CS125-6SS	---
1-1/2"	1-41/64"	1-44/64"	250	300	1.750"	.060"	2-1/2"	CS150-1CS	CS150-1SS	---
	1-45/64"	1-48/64"	250	300	1.813"	.060"	2-1/2"	CS150-2CS	CS150-2SS	---
	1-49/64"	1-52/64"	250	300	1.875"	.060"	2-1/2"	CS150-3CS	CS150-3SS	CS150-3AL
	1-53/64"	1-56/64"	250	300	1.938"	.060"	2-1/2"	CS150-4CS	CS150-4SS	---
	1-57/64"	1-60/64"	250	300	2.000"	.060"	2-1/2"	CS150-5CS	CS150-5SS	---
	1-61/64"	2"	250	300	2.063"	.060"	2-1/2"	CS150-6CS	CS150-6SS	---
	2-1/64"	2-4/64"	250	300	2.125"	.060"	2-1/2"	CS150-7CS	CS150-7SS	CS150-7AL
	2-5/64"	2-8/64"	250	300	2.188"	.060"	2-1/2"	CS150-8CS	CS150-8SS	---
	2-9/64"	2-12/64"	250	300	2.250"	.060"	2-1/2"	CS150-9CS	CS150-9SS	---
	2-13/64"	2-16/64"	250	300	2.313"	.060"	2-1/2"	CS150-10CS	CS150-10SS	---
2"	2-17/64"	2-20/64"	250	300	2.375"	.060"	2-1/2"	CS150-11CS	CS150-11SS	---
	2-21/64"	2-24/64"	250	300	2.438"	.060"	2-1/2"	CS150-12CS	CS150-12SS	---
	2-13/64"	2-16/64"	250	250	2.313"	.060"	2-7/8"	CS200-1CS	CS200-1SS	---
	2-17/64"	2-20/64"	250	250	2.375"	.060"	2-7/8"	CS200-2CS	CS200-2SS	---
	2-21/64"	2-24/64"	250	250	2.438"	.060"	2-7/8"	CS200-3CS	CS200-3SS	---
	2-25/64"	2-28/64"	250	250	2.500"	.060"	2-7/8"	CS200-4CS	CS200-4SS	CS200-4AL
	2-29/64"	2-32/64"	250	250	2.563"	.060"	2-7/8"	CS200-5CS	CS200-5SS	CS200-5AL
	2-33/64"	2-36/64"	250	250	2.625"	.060"	2-7/8"	CS200-6CS	CS200-6SS	CS200-6AL
	2-37/64"	2-40/64"	250	250	2.688"	.060"	2-7/8"	CS200-7CS	CS200-7SS	---
	2-41/64"	2-44/64"	250	250	2.750"	.060"	2-7/8"	CS200-8CS	CS200-8SS	---
	2-45/64"	2-48/64"	250	250	2.813"	.060"	2-7/8"	CS200-9CS	CS200-9SS	---
	2-49/64"	2-52/64"	250	250	2.875"	.060"	2-7/8"	CS200-10CS	CS200-10SS	CS200-10AL
2-53/64"	2-56/64"	250	250	2.938"	.060"	2-7/8"	CS200-11CS	CS200-11SS	CS200-11AL	
2-57/64"	2-60/64"	250	250	3.000"	.060"	2-7/8"	CS200-12CS	CS200-12SS	CS200-12AL	
2-1/2"	2-57/64"	2-60/64"	---	*	3.000"	.060"	3-1/4"	CS250-5CS	---	---
	2-61/64"	3"	---	*	3.063"	.060"	3-1/4"	CS250-6CS	---	---
	3-1/64"	3-4/64"	---	*	3.125"	.060"	3-1/4"	CS250-7CS	---	---
	3-5/64"	3-8/64"	---	*	3.188"	.060"	3-1/4"	CS250-8CS	---	---

* Consult Dixon at engineering@dixonvalve.com for pressure rating

¹ Based on using crimp cam and groove shanks

² Based on using King Crimp nipples



King Crimp Style Sleeves

- Only use the crimp style shanks with the crimp style sleeves and ferrules. Due to differences in dimensions and tolerances for safety reasons, do not interchange other manufacturers' products with Dixon® products.
- For liquid service only
- Not intended for steam service



Hose I.D.	Hose O.D.		Work. Pressure (PSI)		Sleeve I.D.	Sleeve Wall Thick.	Sleeve Overall Length	Carbon Steel Part #	304 Stainless Steel Part #	Aluminum Part #
	From	To	cam & groove ¹	King Crimp nipple ²						
3"	3-13/64"	3-16/64"	125	200	3.313"	.090"	3-3/4"	CS300-1CS	CS300-1SS	---
	3-17/64"	3-20/64"	125	200	3.375"	.090"	3-3/4"	CS300-2CS	CS300-2SS	---
	3-21/64"	3-24/64"	125	200	3.438"	.090"	3-3/4"	CS300-3CS	CS300-3SS	---
	3-25/64"	3-28/64"	125	200	3.500"	.090"	3-3/4"	CS300-4CS	CS300-4SS	---
	3-29/64"	3-32/64"	125	200	3.563"	.090"	3-3/4"	CS300-5CS	CS300-5SS	CS300-5AL
	3-33/64"	3-36/64"	125	200	3.625"	.090"	3-3/4"	CS300-6CS	CS300-6SS	---
	3-37/64"	3-40/64"	125	200	3.688"	.090"	3-3/4"	CS300-7CS	CS300-7SS	CS300-7AL
	3-41/64"	3-44/64"	125	200	3.750"	.090"	3-3/4"	CS300-8CS	CS300-8SS	CS300-8AL
	3-45/64"	3-48/64"	125	200	3.813"	.090"	3-3/4"	CS300-9CS	CS300-9SS	---
	3-49/64"	3-52/64"	125	200	3.875"	.090"	3-3/4"	CS300-10CS	CS300-10SS	CS300-10AL
	3-53/64"	3-56/64"	125	200	3.938"	.090"	3-3/4"	CS300-11CS	CS300-11SS	---
	3-57/64"	3-60/64"	125	200	4.000"	.090"	3-3/4"	CS300-12CS	CS300-12SS	CS300-12AL
	3-61/64"	4"	125	200	4.063"	.090"	3-3/4"	CS300-13CS	CS300-13SS	---
	4-1/64"	4-4/64"	125	200	4.125"	.090"	3-3/4"	CS300-14CS	CS300-14SS	---
4-5/64"	4-8/64"	125	200	4.188"	.090"	3-3/4"	CS300-15CS	CS300-15SS	---	
4-9/64"	4-12/64"	125	200	4.250"	.090"	3-3/4"	CS300-16CS	CS300-16SS	---	
4"	4-13/64"	4-16/64"	110	175	4.313"	.090"	3-3/4"	CS400-1CS	CS400-1SS	---
	4-17/64"	4-20/64"	110	175	4.375"	.090"	3-3/4"	CS400-2CS	CS400-2SS	---
	4-21/64"	4-24/64"	110	175	4.438"	.090"	3-3/4"	CS400-3CS	CS400-3SS	---
	4-25/64"	4-28/64"	110	175	4.500"	.090"	3-3/4"	CS400-4CS	CS400-4SS	---
	4-29/64"	4-32/64"	110	175	4.563"	.090"	3-3/4"	CS400-5CS	CS400-5SS	---
	4-33/64"	4-36/64"	110	175	4.625"	.090"	3-3/4"	CS400-6CS	CS400-6SS	---
	4-37/64"	4-40/64"	110	175	4.688"	.090"	3-3/4"	CS400-7CS	CS400-7SS	---
	4-41/64"	4-44/64"	110	175	4.750"	.090"	3-3/4"	CS400-8CS	CS400-8SS	---
	4-45/64"	4-48/64"	110	175	4.813"	.090"	3-3/4"	CS400-9CS	CS400-9SS	---
	4-49/64"	4-52/64"	110	175	4.875"	.090"	3-3/4"	CS400-10CS	CS400-10SS	CS400-10AL
	4-53/64"	4-56/64"	110	175	4.938"	.090"	3-3/4"	CS400-11CS	CS400-11SS	CS400-11AL
	4-57/64"	4-60/64"	110	175	5.000"	.090"	3-3/4"	CS400-12CS	CS400-12SS	CS400-12AL
	4-61/64"	5"	110	175	5.063"	.090"	3-3/4"	CS400-13CS	CS400-13SS	---
	5-1/64"	5-4/64"	110	175	5.125"	.090"	3-3/4"	CS400-14CS	CS400-14SS	---
	5-5/64"	5-8/64"	110	175	5.188"	.090"	3-3/4"	CS400-15CS	CS400-15SS	---
	5-9/64"	5-12/64"	110	175	5.250"	.090"	3-3/4"	CS400-16CS	CS400-16SS	---
6"	6-21/64"	6-28/64"	75	75	6.500"	.120"	5-1/2"	CS600-1CS	CS600-1SS	---
	6-29/64"	6-36/64"	75	75	6.625"	.120"	5-1/2"	CS600-2CS	CS600-2SS	---
	6-37/64"	6-44/64"	75	75	6.750"	.120"	5-1/2"	CS600-3CS	CS600-3SS	---
	6-45/64"	6-52/64"	75	75	6.875"	.120"	5-1/2"	CS600-4CS	CS600-4SS	---
	6-53/64"	6-60/64"	75	75	7.000"	.120"	5-1/2"	CS600-5CS	CS600-5SS	---
	6-61/64"	7-4/64"	75	75	7.125"	.120"	5-1/2"	CS600-6CS	CS600-6SS	---
	7-5/64"	7-12/64"	75	75	7.250"	.120"	5-1/2"	CS600-7CS	CS600-7SS	---
	7-13/64"	7-20/64"	75	75	7.375"	.120"	5-1/2"	CS600-8CS	CS600-8SS	---
	7-21/64"	7-28/64"	75	75	7.500"	.120"	5-1/2"	CS600-9CS	CS600-9SS	---

¹ Based on using crimp cam and groove shanks

² Based on using King Crimp nipples

King Crimp Style

Large Sleeves

Hose I.D.	Sleeve I.D.	Sleeve Wall Thickness	Sleeve Overall Length	Carbon Steel Part #
6"	6.44"	.120"	5.50"	S6438X550X120CS
	7.00"	.120"	4.00"	S700X400X120CS
	7.00"	.120"	6.00"	S700X600X120CS
8"	8.30"	.120"	8.75"	S830X875X120CS
	8.38"	.120"	6.00"	S838X600X120CS
	8.50"	.120"	6.50"	S850X650X120CS
	8.75"	.120"	6.00"	S875X600X120CS
	8.98"	.120"	8.75"	S898X875X120CS
	9.00"	.090"	4.00"	S900X400X090CS
	9.00"	.120"	4.00"	S900X400X120CS
	9.00"	.120"	6.00"	S900X600X120CS
	9.10"	.120"	4.00"	S910X400X120CS
	9.12"	.120"	6.00"	S912X600X120CS
	9.15"	.120"	6.00"	S915X600X120CS
	9.25"	.120"	4.00"	S925X400X120CS
	9.25"	.120"	6.00"	S925X600X120CS
	9.50"	.120"	4.00"	S950X400X120CS
	9.50"	.120"	6.00"	S950X600X120CS
	9.75"	.120"	6.00"	S975X600X120CS
10"	10.25"	.120"	7.50"	S1025X750X120CS
	10.50"	.120"	7.50"	S1050X750X120CS
	11.00"	.120"	6.00"	S1100X600X120CS
	11.25"	.120"	7.50"	S1125X750X120CS
	11.75"	.120"	6.00"	S1175X600X120CS
	11.75"	.120"	7.50"	S1175X750X120CS
12"	12.44"	.120"	9.00"	S1244X900X120CS
	12.75"	.120"	8.00"	S1275X800X120CS
	13.25"	.120"	7.50"	S1325X750X120CS
	13.25"	.120"	8.00"	S1325X800X120CS
	13.25"	.120"	9.50"	S1325X950X120CS
	13.75"	.120"	7.50"	S1375X750X120CS
14"	14.00"	.120"	8.00"	S1400X800X120CS
	14.00"	.120"	9.50"	S1400X950X120CS



NOTE: Consult Dixon® for additional sleeve sizes

Limited Warranty

DIXON VALVE AND COUPLING COMPANY, LLC (herein called "Dixon®") warrants the products described herein and manufactured by Dixon to be free from defects in material and workmanship for a period of one (1) year from date of shipment by Dixon under normal use and service. Its sole obligation under this warranty being limited to repairing or replacing, as hereinafter provided, at its option any product found to Dixon's satisfaction to be defective upon examination by it, provided that such product shall be returned for inspection to Dixon's factory within three (3) months after discovery of the defect. The repair or replacement of defective products will be made without charge for parts or labor. This warranty shall not apply to: (a) parts or products not manufactured by Dixon, the warranty of such items being limited to the actual warranty extended to Dixon by its supplier; (b) any product that has been subject to abuse, negligence, accident, or misapplication; (c) any product altered or repaired by others than Dixon; and (d) to normal maintenance services and the replacement of service items (such as washers, gaskets, and lubricants) made in connection with such services. To the extent permitted by law, this limited warranty shall extend only to the buyer and any other person reasonably expected to use or consume the goods who is injured in person by any breach of the warranty. No action may be brought against Dixon for an alleged breach of warranty unless such action is instituted within one (1) year from the date the cause of action accrues. This limited warranty shall be construed and enforced to the fullest extent allowable by applicable law.

Other than the obligation of Dixon set forth herein, Dixon disclaims all warranties, express or implied, including but not limited to any implied warranties of merchantability or fitness for a particular purpose, and any other obligation or liability. The foregoing constitutes Dixon's sole obligation with respect to damages, whether direct, incidental, or consequential, resulting from the use or performance of the product.

Some products and sizes may be discontinued when stock is depleted or may require a minimum quantity for ordering.

Limits of Liability

This brochure is intended as a product offering. It is not intended to be a user or technical manual. Information in this brochure is subject to change without notice. All users and distributors of products sold through this catalog should contact Dixon with questions of use, compatibilities, coupling procedures, and life of product. Our full-time engineering and test staff are always available to recommend uses and to assist distributors and users with any questions.



Safety



Safety logos, which appear throughout our brochure, are used as a reminder that the user should carefully review for the appropriateness of the product for the media, application, and environment in which it will be used.

NOTE: Because of the health hazards associated with contamination and lead content in drinking water systems, Dixon couplings, unless otherwise specifically approved, are not recommended for potable water service and should not be used in applications where drinking water will contact the wetted surfaces of the coupling.



WARNING: Dixon products may contain chemicals known to the State of California to cause cancer, birth defects, or other reproductive harm.

Trademark

Kamvalok® is a registered trademark of OPW Engineered Systems.

Copyright

Copyright © 2023 by Dixon Valve and Coupling Company, LLC

All rights reserved. This book is copyrighted material. Use, reproduction or copying of it by anyone other than Dixon® is strictly forbidden without its express written consent.

NOTE: Reasonable care has been taken in preparing this brochure. Dixon Valve & Coupling Company, LLC reserves the right to make corrections.

